

waspper.com



# When cleaning is a pleasure

#Cleaning Pleasure



**SA000-TN3600**

3300PSI

waspper.com



Turbo nozzle for pressure washers – makes the dirt disappear. More efficient cleaning is done by fast rotating 0° water beam in circles. Not suitable for delicate surfaces. A turbo nozzle is a special type of nozzle that creates a powerful jet of water for a pressure washer. It helps the pressure washer to clean faster than the washer does with a regular/standard nozzle. A rotary turbo nozzle automatically spins a zero degree spray in a 4-8 inch circle at 3000 rotations per minute. The spinning water jet hits the surface area from multiple angles, quickly breaking down caked-on dirt and grime. As a result, rotary nozzles can cut cleaning time in half.

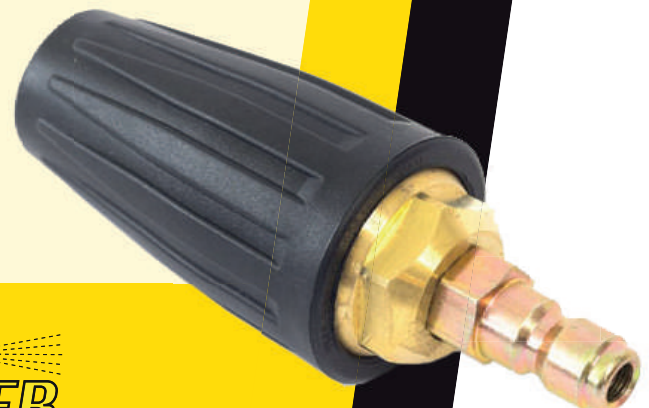
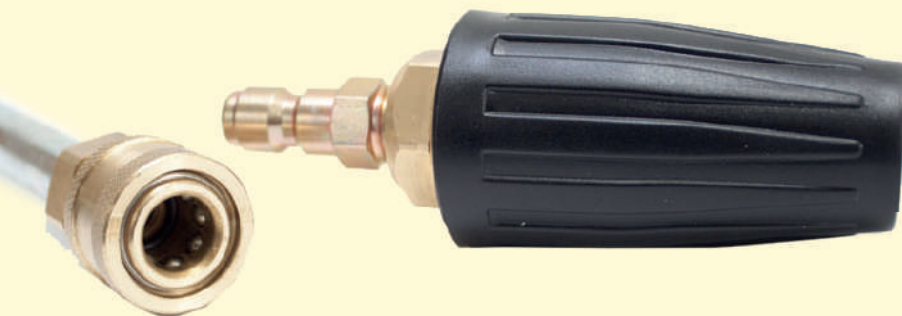
✓ VERSATILITY

✓ HIGH PRESSURE

✓ UNIVERSAL USE

✓ NO USE OF ELECTRICITY

✓ LONG LIFESPAN



- ✓ HOUSE
- ✓ TERRACE
- ✓ ROOF
- ✓ FENCE
- ✓ GARDEN
- ✓ HOUSE



#Cleaning Pleasure